

Fundamental

Overview

Unnamed: 0	Values
Company	TM
Sector	Toyota Motor Corporation
Industry	Consumer Cyclical
Country	Auto Manufacturers
Website	nan
P/E	12.54
EPS (ttm)	15.09
Insider Own	8.50%
Shs Outstand	1.36B
Perf Week	6.81%
Market Cap	304.06B
Insider Trans	0.00%
Shs Float	1.35B
Perf Month	16.62%
Income	20.52B
PEG	0.75
Inst Own	1.30%
Short Float / Ratio	0.05% / 2.15
Perf Quarter	12.50%
Sales	265.88B
P/S	1.14
EPS this Y	-12.50%
Inst Trans	-1.80%
Short Interest	0.61M
Perf Half Y	39.22%
Book/sh	151.7
P/B	1.25
ROA	4.00%
Target Price	188.61
Perf Year	33.74%
Cash/sh	43.01
P/C	4.4
EPS next 5Y	16.80%
ROE	10.60%
52W Range	130.07 - 188.05
Perf YTD	38.53%
Dividend	4.26
EPS past 5Y	1.50%
ROI	2.70%
52W High	0.61%
Beta	0.69
Dividend %	2.25%

Quick Ratio	0.9
Sales past 5Y	4.80%
Gross Margin	17.80%
52W Low	45.46%
ATR	2.76
Employees	375235.0
Current Ratio	1.1
Sales Q/Q	24.20%
Oper. Margin	8.30%
RSI (14)	80.3
Volatility (Week)	0.87%
Volatility (Month)	0.89%
Optionable	Yes
Debt/Eq	1.06
EPS Q/Q	80.30%
Profit Margin	7.70%
Rel Volume	1.38
Prev Close	187.98
Shortable	Yes
LT Debt/Eq	0.6
Earnings	Aug 01 BMO
Payout	33.33%
Avg Volume	285.19K
Price	189.2
Recom	2.0
SMA20	10.17%
SMA50	12.77%
SMA200	27.23%
Volume	393,490
Change	0.65%

Overview

Unnamed: 0	Values
Company	TM
Sector	Toyota Motor Corporation
Industry	Consumer Cyclical
Country	Auto Manufacturers
Website	nan
P/E	12.54
EPS (ttm)	15.09
Insider Own	8.50%
Shs Outstand	1.36B
Perf Week	6.81%
Market Cap	304.06B
Insider Trans	0.00%
Shs Float	1.35B
Perf Month	16.62%

Income	20.52B
PEG	0.75
Inst Own	1.30%
Short Float / Ratio	0.05% / 2.15
Perf Quarter	12.50%
Sales	265.88B
P/S	1.14
EPS this Y	-12.50%
Inst Trans	-1.80%
Short Interest	0.61M
Perf Half Y	39.22%
Book/sh	151.7
P/B	1.25
ROA	4.00%
Target Price	188.61
Perf Year	33.74%
Cash/sh	43.01
P/C	4.4
EPS next 5Y	16.80%
ROE	10.60%
52W Range	130.07 - 188.05
Perf YTD	38.53%
Dividend	4.26
EPS past 5Y	1.50%
ROI	2.70%
52W High	0.61%
Beta	0.69
Dividend %	2.25%
Quick Ratio	0.9
Sales past 5Y	4.80%
Gross Margin	17.80%
52W Low	45.46%
ATR	2.76
Employees	375235.0
Current Ratio	1.1
Sales Q/Q	24.20%
Oper. Margin	8.30%
RSI (14)	80.3
Volatility (Week)	0.87%
Volatility (Month)	0.89%
Optionable	Yes
Debt/Eq	1.06
EPS Q/Q	80.30%
Profit Margin	7.70%
Rel Volume	1.38
Prev Close	187.98
Shortable	Yes
LT Debt/Eq	0.6

Earnings	Aug 01 BMO
Payout	33.33%
Avg Volume	285.19K
Price	189.2
Recom	2.0
SMA20	10.17%
SMA50	12.77%
SMA200	27.23%
Volume	393,490
Change	0.65%

Ratios

Unnamed: 0	2019	2020	2021	2022	2023
Period	FY	FY	FY	FY	FY
Current ratio	1.03578763 47634474	1.04134389 52827325	1.06133762 42622132	1.08607797 55263228	1.10434456 33639632
Quick ratio	0.84582923 36321109	0.83627933 87716055	0.89204507 48832761	0.87486705 18452821	0.88971346 27853461
Cash ratio	0.19612202 554263367	0.23407606 710550224	0.23768621 799731657	0.27990156 285360224	0.31373353 147147204
Days of sales outstanding	115.790981 35125557	113.096603 40036174	131.804175 24524435	121.995245 4957307	118.718259 72865912
Days of inventory outstanding	39.1248870 8944896	36.2422264 8354783	47.0967678 8093407	54.8962552 25848854	50.3642847 9205242
Operating cycle	154.915868 44070451	149.338829 88390957	178.900943 12617842	176.891500 72157955	169.082544 52071154
Days of payables outstanding	38.9715333 2578747	36.2312418 16653565	65.9795022 5670198	61.6586829 08586385	59.0119044 01379944
Cash conversion cycle	115.944335 11491704	113.107588 067256	112.921440 86947644	115.232817 81299316	110.070640 11933159
Gross profit margin	0.18010829 929687935	0.18067589 192807001	0.17756550 685876507	0.19030486 99904686	0.16991347 811227653
Operating profit margin	0.08163736 65824105	0.08161943 377732944	0.10893967 806169286	0.09546666 874020679	0.09875923 37231079
Pretax profit margin	0.07561335 011773597	0.08535274 58343457	0.10774932 404831482	0.12717000 302139864	0.09874316 55955389
Net profit margin	0.06229381 564637038	0.06936797 711138713	0.08250209 731227655	0.09082711 210217548	0.06597670 073055882
Effective tax rate	0.28875699 255950105	0.26752843 000899945	0.22165673 039476133	0.27964141 122035857	0.32048257 531959945
Return on assets	0.03625305 3678605575	0.03941089 2499067395	0.03605852 139667889	0.04210609 762733024	0.03299075 490443343
Return on equity	0.09731539 21883599	0.10349546 559333317	0.09593268 350803799	0.10859229 468723368	0.08650070 3313694

Return on capital employed	0.07319917 516490873	0.07024167 162405469	0.07265353 211584948	0.06534173 409986038	0.07288592 471733918
Net income per EBT	0.82384678 8290348	0.81272109 56518948	0.76568552 09159603	0.71421805 41341355	0.66816473 15299315
Ebt per ebit	0.92621005 8985753	1.04574047 97391918	0.98907327 39938525	1.33208799 15425359	0.99983729 99975472
Ebit per revenue	0.08163736 65824105	0.08161943 377732944	0.10893967 806169286	0.09546666 874020679	0.09875923 37231079
Debt ratio	0.38797384 88296646	0.39014424 6338432	0.41208950 66001104	0.39144392 206500545	0.39541070 78593406
Debt equity ratio	1.04145233 0951297	1.02454316 21299004	1.09635255 91843328	1.00954009 35663683	1.03675421 877061
Long term debt to capitalization	0.35288507 208093944	0.34769676 41683637	0.36490639 53494998	0.36839628 4897073	0.37598278 391327306
Total debt to capitalization	0.51015265 70870212	0.50606140 74792261	0.52298100 06819231	0.50237370 07280699	0.50902274 27619605
Interest coverage	87.8817935 7504096	75.8254648 1671167	62.3671876 64345664	68.0886651 362593	29.3281273 7285494
Cash flow to debt ratio	0.18692623 955976964	0.17470191 289638007	0.10628218 211209942	0.14049534 656800758	0.10058027 711315004
Company equity multiplier	2.68433641 62117394	2.62606246 72679573	2.66047191 5991367	2.57901588 62109456	2.62196798 96463868
Receivables turnover	3.15223168 2817862	3.22732946 0177515	2.76925976 98127144	2.99191987 7834693	3.07450598 44563016
Payables turnover	9.36581060 202934	10.0741785 73482651	5.53202112 0437061	5.91968531 8954021	6.18519269 4636454
Inventory turnover	9.32910040 5210669	10.0711251 87788665	7.75000103 8771092	6.64890525 7714801	7.24719911 15735594
Fixed asset turnover	2.82866482 35448917	2.82317798 61859496	2.30606816 4038933	2.45631148 89865028	2.83072989 64095566
Asset turnover	0.58196874 44481962	0.56814245 04535232	0.43706187 565383603	0.46358511 960573195	0.50003644 52773085
Operating cash flow per share	262.340407 60095473	256.573647 38802636	195.125626 3933267	268.058019 4289075	216.356227 26030067
Free cash flow per share	1.92997888 9332322	- 0.32069535 44191005	- 74.4669494 5680738	- 7.75014783 2401118	- 54.9666863 90818474
Cash per share	405.930488 7213594	407.119393 99439353	666.572651 3228474	620.773887 1381347	675.968866 5904937
Payout ratio	0.34245857 2617484	0.30343519 81496814	0.27859300 099186685	0.24906828 15750971	0.29697493 348476206
Operating cash flow	0.12461578 615879655	0.11996805 745888606	0.10020954 5665445	0.11863204 224336603	0.07953523 977226

sales ratio					
Free cash flow operating cash flow ratio	0.00735677 3235894363	- 0.00124991 5405123817 6	- 0.38163592 775200006	- 0.02891220 2846654838	- 0.25405641 00551052
Cash flow coverage ratios	0.18692623 955976964	0.17470191 289638007	0.10628218 211209942	0.14049534 656800758	0.10058027 711315004
Short term coverage ratios	0.39238520 410953664	0.36415995 381777677	0.22331711 439347662	0.33273762 69894481	0.24013998 785434873
Capital expenditure coverage ratio	- 1.00741129 64633593	- 0.99875164 49331053	- 0.72377967 30047811	- 0.97190022 35888888	- 0.79741229 49988018
Dividend paid and capex coverage ratio	- 1.21735565 4231418	- 1.21095063 17399763	- 0.86785103 63473375	- 1.19300359 05975314	- 0.99235153 3924453
Dividend payout ratio	0.34245857 2617484	0.30343519 81496814	0.27859300 099186685	0.24906828 15750971	0.29697493 348476206
Price book value ratio	9.90614848 0657873	8.98979492 0872129	10.3082824 10218654	11.6702066 74201054	9.09632435 5403743
Price to book ratio	9.90614848 0657873	8.98979492 0872129	10.3082824 10218654	11.6702066 74201054	9.09632435 5403743
Price to sales ratio	6.34115295 9906431	6.02542231 9055615	8.86512174 4030334	9.76101640 4581309	6.93804150 43348735
Price earnings ratio	101.794261 50268105	86.8617274 1321742	107.453289 46578405	107.468091 61564781	105.158964 11172527
Price to free cash flows ratio	6916.84108 7633979	- 40182.8970 1558735	- 231.806899 38174984	- 2845.84900 5330106	- 343.357977 27680654
Price to operating cash flows ratio	50.8856313 9044012	50.2252220 022865	88.4658411 0486863	82.2797637 1305493	87.2322950 7072786
Price cash flow ratio	50.8856313 9044012	50.2252220 022865	88.4658411 0486863	82.2797637 1305493	87.2322950 7072786
Price earnings to growth ratio	- 4.60068535 61598176	7.12831472 6513968	11.6840561 31711863	3.87275659 8935358	- 8.37801793 6587494
Price sales ratio	6.34115295 9906431	6.02542231 9055615	8.86512174 4030334	9.76101640 4581309	6.93804150 43348735
Dividend yield	0.00336422 2772110433 4	0.00349331 2960565286	0.00259268 9366485874	0.00231760 2162936628 4	0.00282405 7235569984

Enterprise value multiple	46.9585656 8307777	45.7893888 1988404	56.8056504 09822036	57.9194552 2617266	48.9805407 50024645
Price fair value	9.90614848 0657873	8.98979492 0872129	10.3082824 10218654	11.6702066 74201054	9.09632435 5403743

Estimates

YEARLY ESTIMATES	2023	2024	2025	2026	2027	2028
Revenue	274597.0	289241.0	300251.0	310823.0	324488.0	329799.0
Dividend	4.14	5.08	5.51	5.86	5.52	5.78
Dividend Yield (in %)	-	-	-	-	-	-
EPS	13.57	17.93	18.57	19.47	21.76	20.89
P/E Ratio	-	-	-	-	-	-
EBIT	19735.0	28022.0	29636.0	31027.0	35815.0	35872.0
EBITDA	30343.0	39127.0	40628.0	41570.0	48511.0	46475.0
Net Profit	18600.0	24483.0	25241.0	26390.0	29818.0	29007.0
Net Profit Adjusted	18462.0	26160.0	26562.0	27543.0	32047.0	-
Pre-Tax Profit	27039.0	34842.0	35892.0	37612.0	42679.0	42227.0
Net Profit (Adjusted)	26926.0	34841.0	35797.0	37462.0	42679.0	42227.0
EPS (Non-GAAP) ex. SOE	-	-	-	-	-	-
EPS (GAAP)	13.54	19.04	19.44	20.2	23.65	-
Gross Income	49820.0	57687.0	60321.0	62611.0	75145.0	77411.0
Cash Flow from Investing	-15191.0	-18775.0	-18244.0	-19379.0	-14225.0	-14603.0
Cash Flow from Operations	16584.0	27041.0	28574.0	30635.0	19425.0	20596.0
Cash Flow from Financing	2731.0	314.0	-5416.0	-7455.0	-8762.0	-9211.0
Cash Flow per Share	20.52	28.71	27.1	27.21	33.41	-
Free Cash Flow	2752.0	9417.0	11087.0	11968.0	17829.0	5992.0
Free Cash	4.94	3.32	2.95	3.43	3.84	4.42

Flow per Share						
Book Value per Share	157.03	156.86	169.79	182.88	199.91	205.33
Net Debt	154204.0	147268.0	146792.0	92629.0	13783.0	155830.0
Research & Development Exp.	8944.0	8719.0	9212.0	9841.0	9337.0	-
Capital Expenditure	12123.0	13264.0	13619.0	14580.0	14512.0	14603.0
Selling, General & Admin. Exp.	27023.0	28205.0	29119.0	30417.0	40995.0	41540.0
Shareholder's Equity	211269.0	214646.0	230874.0	246741.0	265349.0	285145.0
Total Assets	544303.0	546720.0	571903.0	594838.0	575775.0	596323.0

Growth

Unnamed: 0	2019	2020	2021	2022	2023
Period	FY	FY	FY	FY	FY
Revenue growth	0.02880139 934260306	- 0.00978270 7625346804	- 0.09072501 589709747	0.15303973 129416265	0.18403064 777276457
Gross profit growth	- 0.00846229 1249913257	- 0.00666214 049643858	- 0.10637843 43153782	0.23576408 526411352	0.05716036 360329844
Ebitgrowth	0.02820287 1665120744	- 0.01000022 2893604777	0.21363405 07820927	0.01043865 770761707	0.22486686 737677408
Operating income growth	0.02820287 1665120744	- 0.01000022 2893604777	0.21363405 07820927	0.01043865 770761707	0.22486686 737677408
Net income growth	- 0.24503374 722281587	0.10266757 237476984	0.08143694 462386022	0.26938917 123666245	- 0.13992161 706039416
Epsgrowth	- 0.22125890 736342055	0.12185450 663413161	0.09196574 225122349	0.27749766 573295975	- 0.12551771 18355016
Epsdiluted growth	- 0.22538424 591738707	0.13083242 908076262	0.08930774 503084304	0.29132322 40609072	- 0.12551771 18355016
Weighted average	- 0.02572840	- 0.02528822	- 0.00129678	- 0.00637458	- 0.01648738

shares growth	4863327073	573579139	6829767788	3745992006	1176017193
Weighted average shares diluted growth	- 0.02540832 9064775012	- 0.02489349 6156131175	- 0.00168326 4125525558	- 0.02241833 9341652133	- 0.01650940 594091488
Dividends per share growth	0.05573835 8980087395	0.00236595 017190859	- 0.00581089 5173522176	0.14214257 306386627	0.04270022 010726509
Operating cash flow growth	- 0.10532329 028275236	- 0.04671431 5335566824	- 0.24048088 32289927	0.36501425 291200157	- 0.20618275 056647006
Free cash flow growth	- 0.95467052 29166599	- 1.16196319 0184049	- 230.903520 49910874	0.89658843 39002462	- 5.97540625 6678033
Ten y revenue growth per share	0.61002365 87575988	0.76956400 21624954	0.60740543 14376528	0.91097263 36153269	0.95221363 90656771
Five y revenue growth per share	0.29833380 76219909	0.24028900 883234483	0.06647807 104058834	0.23146600 726185584	0.36448631 144732585
Three y revenue growth per share	0.15302530 872556208	0.16557990 648192616	- 0.02329233 6749702162	0.07333346 509734348	0.27193050 665282353
Ten y operating c f growth per share	1.78889787 73411803	0.57243572 02705362	0.51158086 32073581	1.90062012 83273116	0.39757674 44279835
Five y operating c f growth per share	0.14007914 963931864	0.09946658 663045793	- 0.31953038 15485278	0.18085257 635580593	- 0.24266103 49775309
Three y operating c f growth per share	- 0.08512951 187261095	0.13026147 543968594	- 0.31697718 24302901	0.02179462 8895483906	- 0.15674805 47482077
Ten y net income growth per share	5.71235740 4061745	10.1061622 09819347	5.17084740 3215451	10.3751629 05558666	1.95363831 2498326
Five y net income growth per share	0.13975810 947955253	0.07813809 768696799	0.08059950 268185077	0.68573245 27220107	0.06050040 020980898
Three y net	-	0.21857368	-	0.56496721	0.20974809

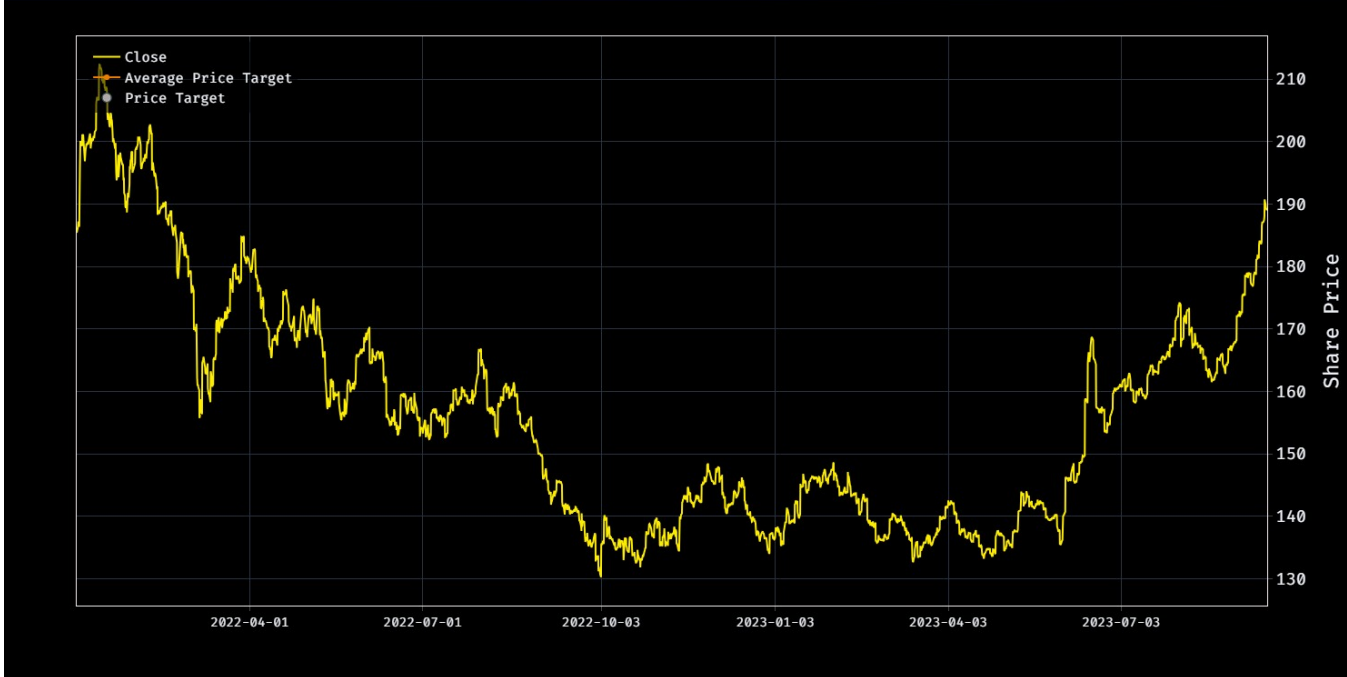
income growth per share	0.11787197 89822576	54645605	0.05074991 7324384095	13654368	82146995
Ten y shareholder s equity growth per share	1.10293293 4468892	1.16963836 51882354	1.54116658 1759533	1.81539183 6646966	1.70445831 40831313
Five y shareholder s equity growth per share	0.47571744 738731414	0.34858397 3639341	0.55553937 65971705	0.62292464 1761759	0.63195517 75397274
Three y shareholder s equity growth per share	0.25179415 543265476	0.23094653 458546174	0.31713739 15217024	0.40245123 62925096	0.44742687 49160403
Ten y dividendper share growth per share	0.60258581 09596385	3.09255102 84516817	3.97257513 61236	4.12406906 9250941	3.44174755 4500743
Five y dividendper share growth per share	0.79683279 07660088	0.28122991 932066677	- 0.01377195 0005746414	0.20471279 749447968	0.25294322 35579539
Three y dividendper share growth per share	- 0.01034905 0908634153	0.06094825 860919086	0.05208688 380183634	0.13819225 221013173	0.18399204 571977903
Receivables growth	0.05867758 776823669	- 0.03282439 5397855866	0.05968027 1091433944	0.06722996 311634759	0.15222570 681165407
Inventory growth	0.04591208 1672926375	- 0.08337537 023847348	0.18608840 215563727	0.32317138 19949114	0.11363976 557012746
Asset growth	0.03237441 2395072626	0.01431518 4359404709	0.18197844 83180815	0.08707049 978528	0.09771796 565784892
Book valueper share growth	0.05994416 690080108	0.06372313 588469358	0.16820613 990111435	0.12859904 884612738	0.09783599 921783298
Debt growth	0.04148398 216953824	0.01998945 1209810653	0.24846366 478731127	0.03260853 086959343	0.10884193 971111049
Rdexpense growth	0	0	0	0	0

Sgaexpenses growth	-	-	-	0.12956378	0.20565111
	0.03693388	0.00389470	0.11135272	99131755	894345958
	9231336725	1935356414	71525274		
		7			

Shares

Unnamed: 0	Holder	Shares	Date Reported	Stake	Value
0	Fisher Asset Management, LLC	5878893	2023-06-29	0.36 %	1112286537
1	Morgan Stanley	1582915	2023-06-29	0.10 %	299487513
2	Goldman Sachs Group Inc	1072461	2023-06-29	0.07 %	202909617
3	Blackrock Inc.	668545	2023-06-29	0.04 %	126488711
4	FMR, LLC	574716	2023-06-29	0.04 %	108736265
5	Srb Corp	578732	2023-06-29	0.04 %	109496092
6	Bank of America Corporation	718875	2023-06-29	0.04 %	136011147
7	Northern Trust Corporation	560793	2023-06-29	0.03 %	106102033
8	First Trust Advisors LP	450870	2023-06-29	0.03 %	85304602
9	Ameriprise Financial, Inc.	434105	2023-06-29	0.03 %	82132664

Price Target

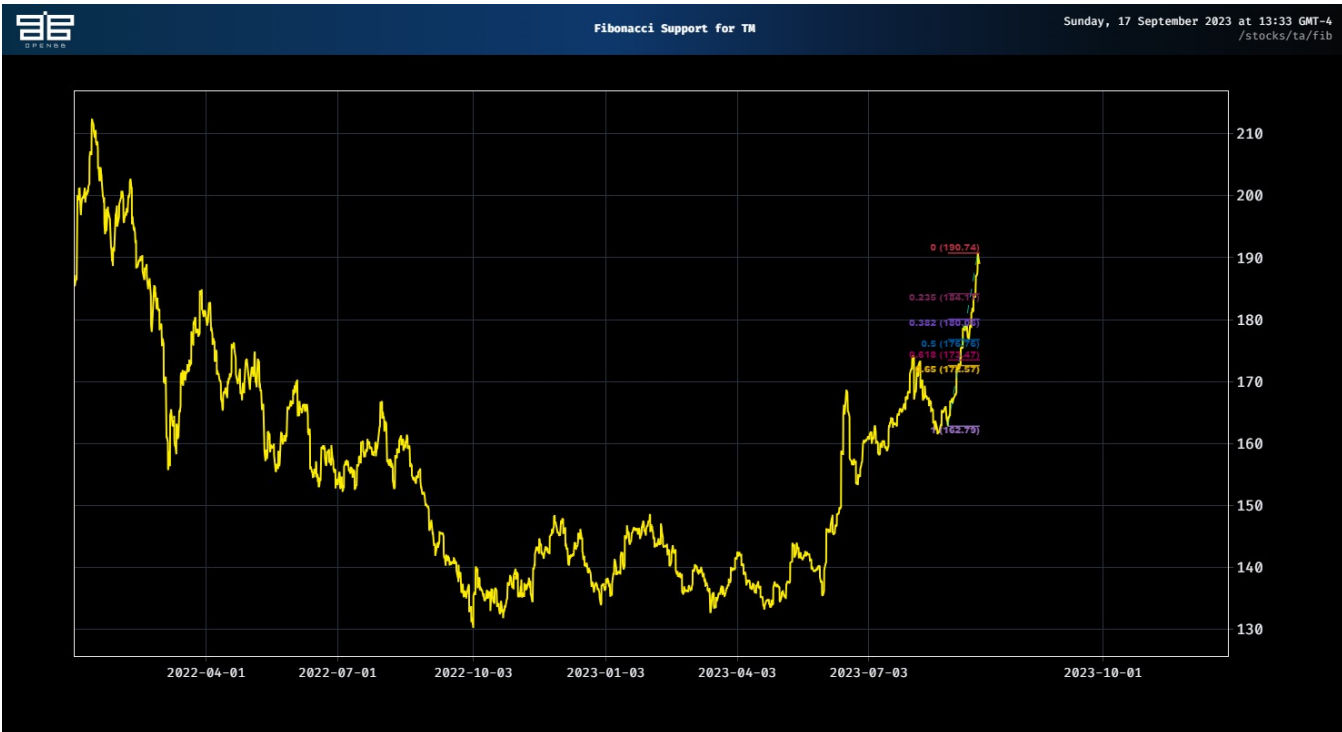


Technical Analysis

Recommend

Interval	RECOMMENDATION	BUY	SELL	NEUTRAL
1 month	BUY	13	3	10
1 week	BUY	11	5	10
1 day	BUY	11	7	8
4 hours	BUY	15	1	10
1 hour	BUY	15	5	6
15 min	BUY	16	4	6
5 min	STRONG_BUY	16	0	10
1 min	STRONG_BUY	17	0	9

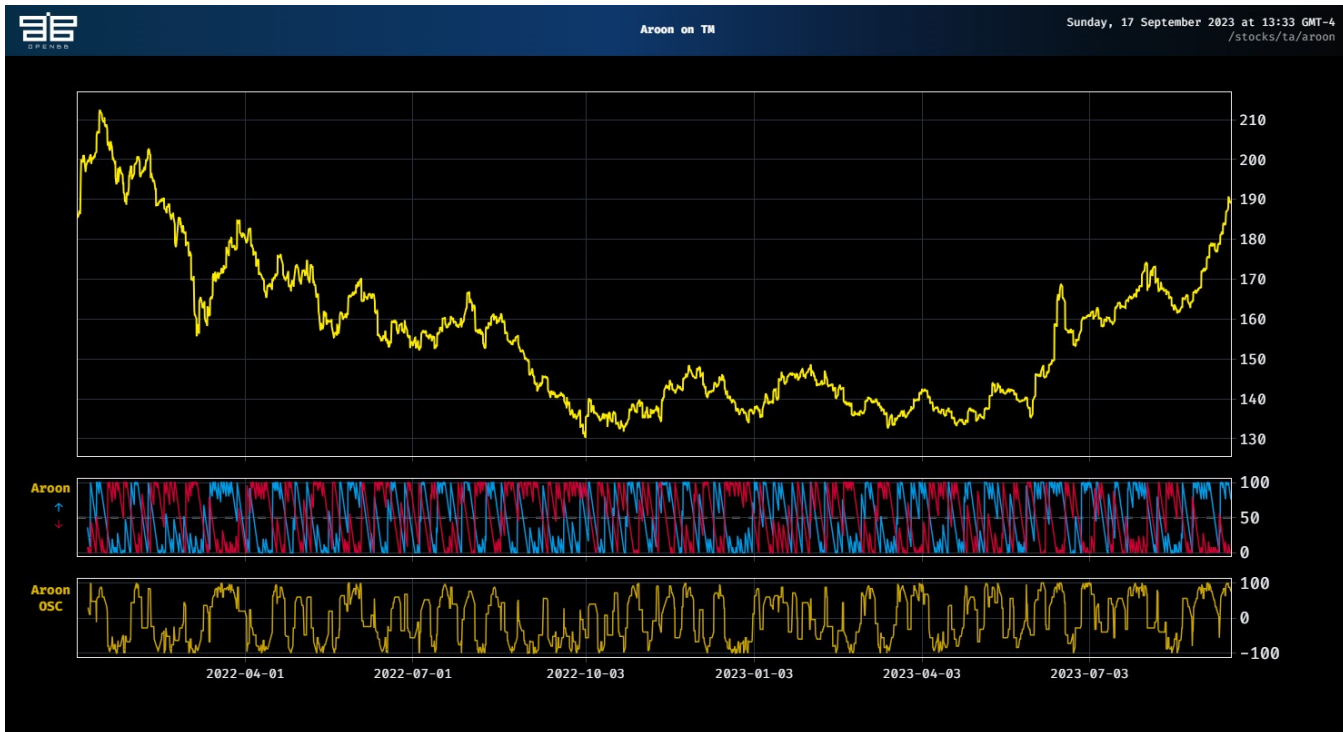
Fibonacci



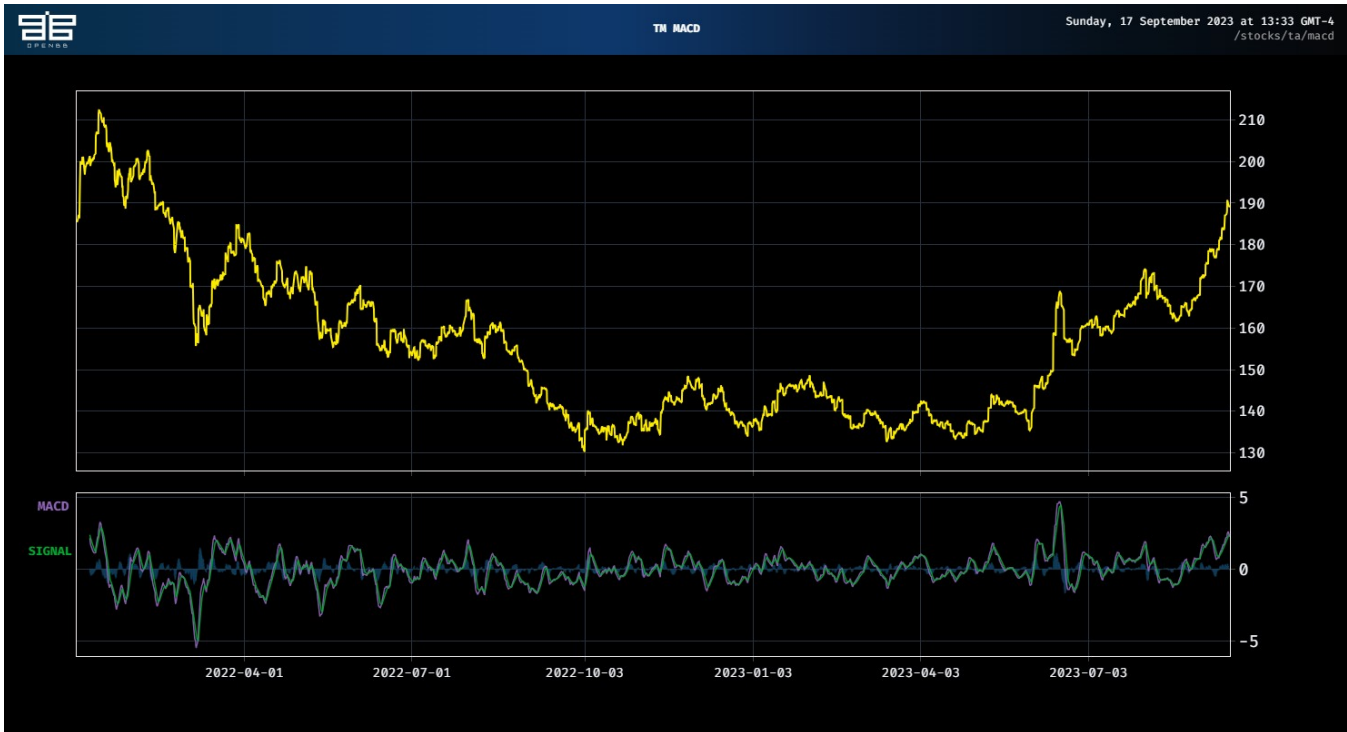
Bollinger Band



Aroon



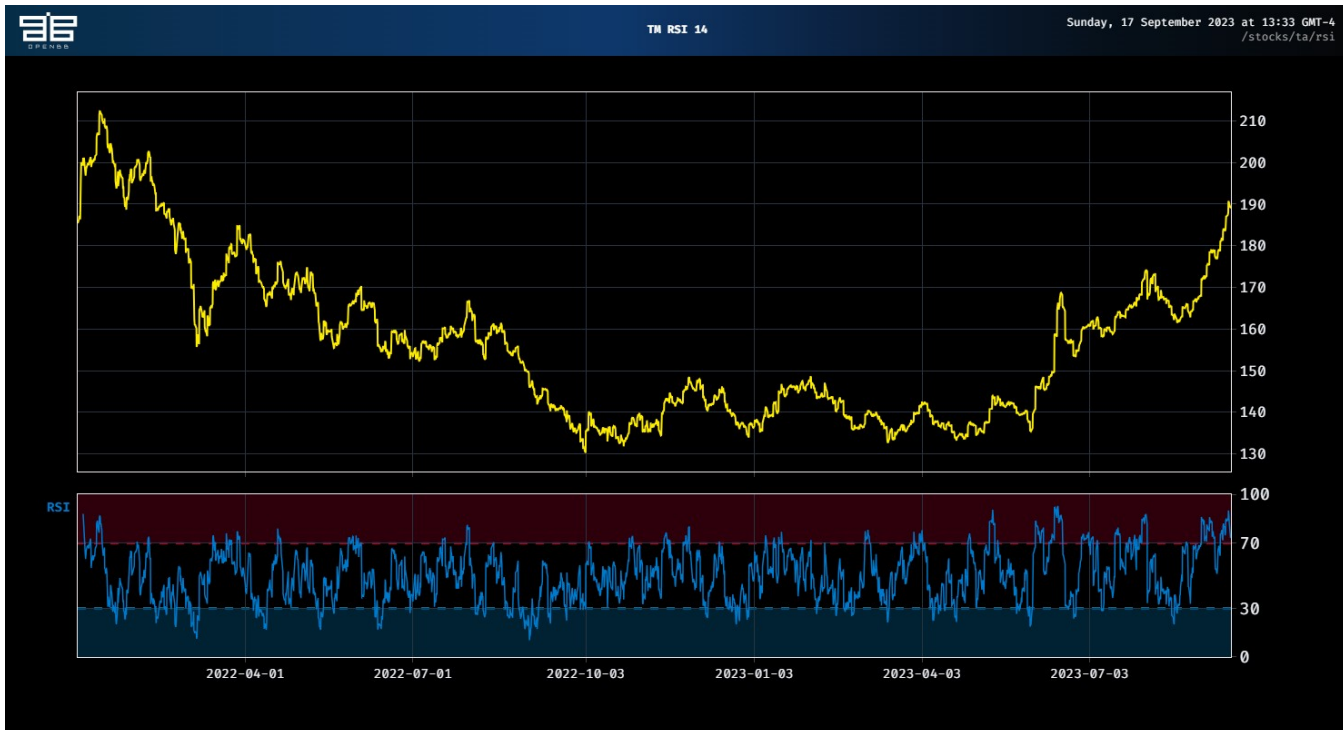
MACD



Ichimoku

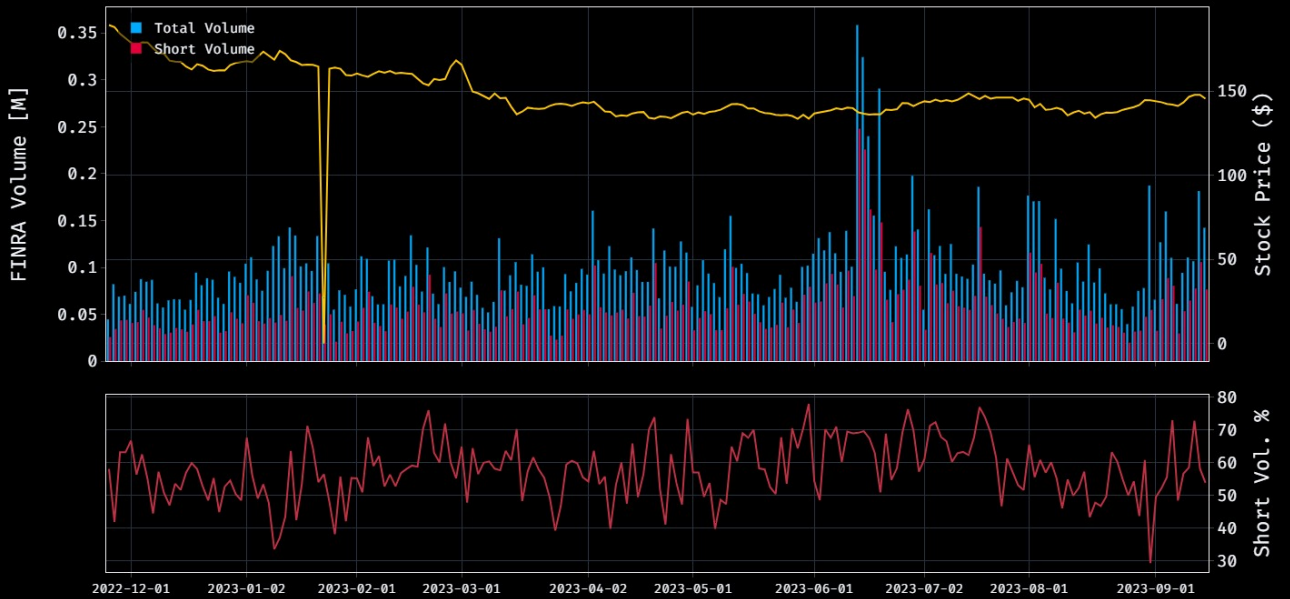


RSI



Dark Pool

Price vs Short Volume Interest



Insider

Stat